



MANAGING YOUR SYSTEMS HERE

INTELEX

YOUR COMPLETE PERFORMANCE MANAGEMENT SYSTEM



BENEFITS YOU HERE

Printed on Envirocare, 100% recycled paper.

- Envirocare is manufactured with 65% post-consumer waste and 35% pre-consumer waste and utilises no virgin fibre.
- Envirocare is manufactured in a mill with a internationally recognised Environmental Management System.
- Elemental Chlorine Free.
- Environmental Accreditations – ISO 14001 EMS, Blue Angel, Nordic Swan, EUGROPA, European Flower.



CONTENTS

Intelex: Your Business Management System Software Solution	2-3
Intelex System	4
Business Performance Management System	5
Quality Management System	6
Environment Management System	7
Safety Management System	8
Integrated Management System	9
Most Popular Add-On Modules	9
iForms	10
Clients Serviced by Graham A Brown & Associates	11
Clients by Industry	11
Sample of International Clients	11
Hosting Options Online or In-House	12

INTELEX: YOUR BUSINESS MANAGEMENT SYSTEM SOFTWARE SOLUTION



BENEFITS

To extract real value from performance data, organisations need an accurate and comprehensive, real-time view of their business. The Intellex Business Management System makes achieving that view easily attainable. By integrating the health and safety, environmental, quality and business performance management systems into a central information portal, the Intellex integrated management program enables organisations to reduce duplication of effort, increase efficiencies, lower the overall cost of management system maintenance, and increase certainty.

With Intellex, users throughout your organisation will have the ability to create, access and manage health and safety, environmental and quality information. Based on the philosophy that **“the data finds the user”** – not the other way around – Intellex allows users to track scheduled and overdue tasks, escalates email notifications and provides real-time data roll-up to improve efficiency of system implementation and maintenance. Configurable reporting and interactive dashboards allow “snapshots” of the system to be taken at any moment in time, reducing preparation time for management meetings or monthly reports.

The Intellex Business Management System is the only software where you can see your business performance on one page.

Combine this with the Intellex iForms system, a web-based application that enables Intellex users to build custom software solutions to capture other performance metrics without ever requiring the help of a developer and you have a complete business management system solution.

Having many years of experience in management system implementation in a variety of industries and government agencies Graham A Brown & Associates recognised the benefits of the software and in 1992 became an Intellex Value Added Partner.

Graham A Brown & Associates works closely with Australasian Intellex clients, providing accessible and invaluable management systems development and maintenance services as well as training and ongoing support for Intellex users.

OVERVIEW

The Intellex story began in the 1990’s when the system was released as the PC-based “ISOsoft”, designed for users to manage compliance with the ISO 14001 Environmental Management, ISO 9000 Quality Management and OHSAS Safety Management systems. The Intellex product line was a worldwide success with versions released in English, Spanish, Italian, Portuguese and Mandarin Chinese. Today the Intellex System is accessed by **250,000 users, across 5 continents**, offering a library of over 65 unique software modules, all of which have been strategically designed to address a specific business need. **So how does Intellex assist these clients to extract real value from performance data and provide an accurate and comprehensive, real-time view of their business?**

The database component will retain records required for certification and auditing purposes, saving you time and money in preparing for your management system audits. The system is made up of a library of over **65 different modules** meeting specific business needs, including these management system standards. Modules such as Document Control, Training Management and Audits allow users across Safety, Environment and Quality systems to maintain their system data using a common platform, ensuring consistency and facilitating internal benchmarking and auditing. Other modules designed to meet the specific requirements of individual management systems, such as Safety Incident Reporting, Environmental Aspects and Supplier Management combine to provide you with a complete management system package.

Intellex will improve employee productivity through personalised task management and save time and money by automating the setting, tracking and sign-off of business-related tasks. Intellex provides users with a “Site Map” that summarises conformance with each element of each module and dedicated home pages and dashboards to display real-time data in a user-configurable graphic format, so you can see your business performance on one page.

“We chose Intellex because we believe software should adapt to the company, rather than the company adapting to the software.”
Gary Smith, Air Liquide.

Intellex and Graham A Brown & Associates recognise that our clients have unique business needs, which is why we’ve designed our software to use a modular platform that enables us to create targeted EHS&Q and business performance management solutions. Each module can be optimised to work as a stand-alone solution or seamlessly integrated to work in combination with other Intellex Modules. Intellex is entirely web-based, making it very easy and inexpensive to deploy corporate wide. The system can easily be rolled out for small operations using the entry-level Work Groups Edition, or across multiple sites using the Professional or Corporate Editions.

Within hours of implementation the Intellex system will enable fluid tracking and communication of management system initiatives and importantly, streamlining and standardising reporting and task

management across the organisation. This is extremely useful for organisations with sites across multiple states, countries or with numerous business units.

CUSTOMISATION

Users can also create their own data capture forms and build their own modules from scratch using Intelx iForms, so your specific KPI's can be captured and monitored along with standard system activities. Every iForm application can include user-configured forms, data points, units of measurement and form routing to notify key personnel of relevant performance data. The data collected in an iForm can be viewed in a series of reports and scorecards displayed on all end-users personalised dashboards.

The Intelx system features an SQL platform, which can be configured to integrate with other organisational software and database systems, such as SAP, PeopleSoft, Domino.doc and more, meaning that there is no need to double up on functions already managed by other software in your organisation, such as training.

"Using Intelx to ensure the effectiveness of our performance provides a safer environment for employees, contractors and in our case, the public."

Alan Conquergood, Trans-Northern Pipelines.

Intelx has users in virtually all industry sectors including aerospace and defence, automotive, banking and financial services, construction, consumer goods, energy, food and beverage, forestry, government, manufacturing, metals and mining and waste/wastewater management.

SECURITY

Offering four levels of user licence and configurable system security, Intelx provides a cost effective way of ensuring that all personnel have access appropriate to their needs. The system can be modified to ensure that users only see the modules and data that are relevant to their position and/or location. Managers can access real-time performance data across the whole organisation. Line Managers and Supervisors can track the activities of their team members and the workforce has an easy, user-friendly portal for reporting performance and incident data.

TASK MANAGEMENT

All users have the ability to access their own tasks, training requirements and relevant data and documents. For instance the latest risk assessments, custom designed job safety analysis forms and audit data can all be made accessible with user-defined toolbars and icons. Likewise, all users are able to submit important information such as incident reports and document change requests, attach photos and other data to their entries and take advantage of the message centre to inform other personnel and supervisors of important developments.

Intelx offers over 65 unique software modules, all of which have been strategically designed to address a specific business need. Because each module can be optimised to work as a stand-alone solution or seamlessly integrated to work in combination with other Intelx Systems, you can choose the system that's right for your organisation.

IN BRIEF

The software serves two purposes:

- I. Database for storage and retrieval of system data and records such as risks, legal requirements, audits etc (via end-user screens and reports).
- II. A Task Management System which allows system related tasks (such as maintenance, audits, document reviews etc) to be allocated to a person responsible, scheduled and automatic email reminders sent.

User Friendly – The primary feature of the Intelx system is its user friendliness. Principle to this concept is the Intelx approach to data management – "the user does not have to find the data, the data finds the user". Automated tracking, management and notification across multiple departments or locations eliminates the opportunity for human error and streamlines workflow processes.

Fluid Knowledge Transfer – Share knowledge and best practices across locations, departments and workgroups using document control and the Intelx Message Centre.

Escalating Email Notification – Send automated escalating email notifications to individual employees, departments, or work groups responsible for specific tasks.

Comprehensive Real Time Data Reporting and Analysis – The Intelx system is specifically designed to streamline corporate wide data collection. Data can be rolled-up in real-time to multiple levels of management allowing unparalleled control over the monitoring, reporting and improvement of key performance metrics and compliance requirements.

Compliance Management – The Intelx system includes comprehensive tools for managing due dates, task lists and reminders associated with maintaining permits, licences and regulatory requirements. Complete with online forms, built in work flow and escalating email notifications of critical activities, the Intelx system is a comprehensive approach to ensuring all compliance requirements are captured.

Document Control – Track file revisions and approvals in a central, organisation-wide file database. Old file versions and the associated editing details will be automatically archived.

Multiple Security Levels – Define unique user-security settings to ensure only selected users have access to confidential information.

Experienced and Professional Support Staff – Intelx Technologies Inc and Graham A Brown & Associates have provided electronic management systems since 1992, implementing systems for organisations of all sizes in almost every industry. We work with you to ensure your organisation's needs are understood and met, from implementation through to ongoing support.

An Extremely Cost Efficient Solution – Intelx develops its systems on an efficient web based platform that keeps costs associated with system support, updates and maintenance as competitive as possible in the compliance software marketplace. The Intelx system is the most comprehensive, yet cost effective, solution available for compliance and performance management.

INTELEX SYSTEM

The Intelex System offers a library of over 65 unique software modules, all of which have been designed to address a specific business need, or requirement of the international standards for Environment, Quality and Health and Safety. All modules interact with the Intelex Platform, which comes standard with any system. The system is comprised of four types of modules:

- I. **Business Modules/Integrated System Modules** – these modules integrate the overlapping requirements between quality, safety and/or environmental management systems (e.g. audits, management review, document control, training etc). They can also be used as a stand-alone system.
- II. **Dedicated System Modules** – these modules are specific to the particular management system (i.e. quality, safety, or environment) and control specific elements such as incident reporting, objectives etc.

III. **Pre-built Add-On Modules** – these modules have been designed to meet additional needs that some clients may require above and beyond the standard system modules. As they are pre-built, they can provide a cost-effective means of extending your Intelex system.

IV. **iForms** – iForms are customised modules built to meet needs specific to your organisation. Intelex has built the iForms System to utilise a truly user-intuitive, web-based interface that allows users with no programming experience to build rich web applications/forms that can be deployed across the Intelex System and the entire organisation.

All modules are optional in the Intelex System. For ease and value of purchase, the modules are grouped into Suites and the Suites are further arranged into Systems. There are also add-on modules and iForms which are not part of any suite. Systems provide the best value for money; however, it is not mandatory to purchase modules as a Suite or System.

There are 5 Systems available for purchase (groups of Suites):

<p>Business Performance Management System</p> <p>Document and Records Management Suite</p> <ul style="list-style-type: none"> • Document Control Module • Records Management Module <p>Checking and Corrective Action Suite</p> <ul style="list-style-type: none"> • Audit Management Module • Nonconformances/Corrective & Preventive Actions Module • Management Review Tracking Module 			<p>Training and Communications Management Suite</p> <ul style="list-style-type: none"> • Training Management Module • Internal and External Communications Module <p>Compliance Management Suite</p> <ul style="list-style-type: none"> • Legal and Other Requirements Module • Permits and Related Activities Module • Maintenance, Measurement and Monitoring Module • Emergency Response Module • Operational Control Module 		
<p>Quality Management System</p> <ul style="list-style-type: none"> • Business Performance Management System <p>Quality Management Modules Suite</p> <ul style="list-style-type: none"> • Quality Nonconformances and Product Defect Tracking Module • Supplier Management Module • Supplier Nonconformance Module • Customer Management Module • Quality Objectives and Activities Module • Quality Policy Module 	<p>Environmental Management System</p> <ul style="list-style-type: none"> • Business Performance Management System <p>Environmental Management Modules Suite</p> <ul style="list-style-type: none"> • Environmental Objectives and Targets Module • Environmental Incident Reporting Module • Environmental Aspects and Impacts Module • Environmental Policy Module 	<p>Safety Management System</p> <ul style="list-style-type: none"> • Business Performance Management System <p>Safety Management Modules Suite</p> <ul style="list-style-type: none"> • Safety Objectives and Targets Module • Standard Safety Incident Reporting Module • Safety Hazards & Risk Assessment Module • Safety Meetings and Management Module • Local Safety Meetings Module • Work Observations Module • Safety Policy Module 			
<p>Integrated Management System</p> <ul style="list-style-type: none"> • Business Performance Management System • Quality Management Modules Suite • Environmental Management Modules Suite • Safety Management Modules Suite 	<p>Pre-built Add-On Modules (not available as part of a System or Suite)</p> <ul style="list-style-type: none"> • ISO 14001 Implementation Module • ISO 9001:2000 Implementation Module • Upgrade to Configurable Types in Quality Nonconformances • Audits Management with checklist builder • Project Management Module with Time and Cost Tracking • Notice of Violations Reporting Module • OH&S Meetings Management Module • Complaint Notices Reporting Module 	<ul style="list-style-type: none"> • Corporate Safety Committee Meetings Module • Technical Assistance Form • Master Safety Incident and Accident Reporting with Two Sub-forms • Rework Reports Module • Quality Escape/Concerns Module • License Compliance Tracking Module • Hazardous Materials Management Module • Health and Safety Concerns Reports Module • Employee Reviews Module 			

BUSINESS PERFORMANCE MANAGEMENT SYSTEM



The Intellex Business Performance Management System (BPMS) is a comprehensive software application designed to enable organisations to optimise their business performance and measure their success through real-time, corporate reporting dashboards. Exceeding document control requirements for ISO 15489, ISO 9001:2000, ISO 14001, OHSAS 18001 and AS4801 the system utilises a web-based platform, which allows any employee with access to use the software from anywhere in the world.

Intellex's BPMS is a powerful tool that manages multiple business processes in a central, online portal maintaining confidential business data in a SAS 70 secure, hosting environment. The system includes specific modules to streamline the critical business processes associated with common business practices such as document control, records management, training management, compliance management and audits management. It also includes Intellex's innovative reporting suite, which organises your business intelligence in scorecards and charts that are then displayed on corporate dashboards for complete, real-time visibility across your organisation. Additionally Intellex automatically archives historical data for future internal and external audits.

Two of the features that set the Intellex Performance Business Management System apart from our competitors' are configurability and a user-intuitive approach to navigation. All of Intellex's software solutions are thoughtfully designed to be easily configured by end users, not computer programmers. Almost every aspect of the Intellex BPMS including toolbars, screen layouts, calculations, workflow routing and reporting can all be configured by the end user to meet their exact business needs.

DOCUMENT AND RECORDS MANAGEMENT SUITE

- **Document Control Module**
Functions as a central, web-based portal for an organisation to store all of their business documents and records. Store an unlimited number of documents in any format with the option for unique security settings assigned to user logins for restricted confidential document access.
- **Records Management Module**
Streamline, track, archive and reference environmental, quality, safety and operations records to meet and exceed regulatory standards.

CHECKING AND CORRECTIVE ACTION SUITE

- **Audit Management Module**
Provides a central online scheduling and tracking tool to consistently prepare for enterprise, compliance and internal audits.
- **Nonconformances, Corrective / Preventive Actions Module**
Allows advanced tracking, analysing and reporting on nonconformances and corrective / preventive actions organisation-wide. Data can be rolled up by location, region, or department.
- **Management Review Tracking Module**
Tracks management review meetings, generates follow-up actions and stores archived meeting information.

TRAINING AND COMMUNICATIONS MANAGEMENT SUITE

- **Training Management Module**
Tracks all training, qualifications and licenses through course scheduling, history keeping and roll-up reporting. All staff can receive email notifications of upcoming courses and can access a personalised "My Training" calendar.
- **Internal / External Communications Module**
Enables users to track and report internal and external communication. All communications can be entered into the system through web-based forms with automatic email notification to the person responsible.

COMPLIANCE MANAGEMENT SUITE

- **Legal & Other Requirements Module**
Manages the review, update and implementation of legislative requirements from Federal, State and local regulatory agencies.
- **Permits & Related Activities Module**
Enables users to track, alert and report on the activities and requirements needed to maintain compliance to federal, state and local regulations. Permits and related activities can be tracked, updated and maintained along with corporate-wide mandates.
- **Maintenance, Measurement & Monitoring Module**
Tracks, notifies and records the completion of maintenance, measurement and monitoring activities utilising document attachments, email notifications and a centralised calendaring system.
- **Emergency Response Module**
Enables the scheduling, notification and archiving of emergency response tests and situations to comply with ISO 14001 and OSHAS 18001 emergency preparedness and response requirements.
- **Operational Control Module**
Designed to enable users to track and report operational equipment maintenance activities. Activity information can be analysed and reports can be generated for supervisors, plant managers and management teams.

“I would not hesitate to recommend Intelex to your client. The product is everything we were lead to believe it would be when first presented to us, but more importantly the service and professionalism we have experienced in working with Intelex have been outstanding and this is every bit as important as the quality of the product – maybe even more! Overall this project has run very smoothly, which would not have been possible without an excellent supplier.”

Ruth Carpenter, Project Manager IT, Virgin Atlantic Airways Ltd.

QUALITY MANAGEMENT SYSTEM

Successful businesses understand the importance of improving their bottom line without compromising product and service quality. By implementing a standard approach to quality with an effective Quality Management System (QMS), organisations can prevent costly product defects, supplier nonconformances, ineffective corrective actions and sub-standard service.

Drawing on nearly two decades of industry experience, the Intelex Quality Management System enables organisations to practice both pro-active and reactive quality control with an emphasis on continual improvement. The system utilises a highly-configurable, web-based platform that enables small, medium and large organisations to easily capture, track, analyse and report on all quality-related records and data such as nonconformances, corrective actions, audit schedules, maintenance activities, response protocol, document control, etc.

By designing a program that takes a “full lifecycle” approach to quality, the Intelex Quality Management System will enable your organisation to continually improve by relying on accurate, up-to-date reporting tools that provide greater accuracy when it comes to trending and analysis.

The Intelex Quality Management System includes a comprehensive list of modules that enables a user to streamline a single quality process or an entire Quality Management System. Not only can a user choose from a full list of QMS modules, but they also have the ability to conceptualise and build their own web-forms.

QUALITY MANAGMENT SUITE

- **Quality Nonconformances and Product Defect Tracking Module**
Report, track and analysis all product and service-related issues.
- **Supplier Management Module**
Enables the scheduling, notification and archiving of supplier evaluation activities and results. Also functions as a database for maintaining supplier details like company name, contact details and performance ratings.

- **Supplier Nonconformances Module**
Maintains supplier records and archives supplier nonconformances. This module also streamlines the management of supplier investigations, nonconformance details and corrective actions.
- **Customer Management Module**
Addresses customer management needs and enables scheduling, tracking and analysis of customer records. This module also enables users to identify, track and evaluate nonconformances.
- **Quality Objectives and Activities Module**
Drives quality performance and improvement by allowing users to establish, track and report on all quality management programs and activities.
- **Quality Policy Module**
Streamlines the control, tracking and communication of an organisation’s quality policies

NOTE: The Intelex Quality Management System includes the Business Management System.



Intelex has enabled Volvo to develop and maintain an EMS certified to ISO 14001, which has been expanded over time to include additional operations and sites.

Kyle Heiner, National HSE Manager
Volvo Commercial Vehicles Australia Pty Ltd

ENVIRONMENTAL MANAGEMENT SYSTEM

The Intelex Environmental Management System (EMS) provides a framework for an organisation to develop a complete environmental management program. Improve environmental performance by incorporating environmental considerations into your business decisions and risk management efforts. The system also enables organisations to define and enforce corporate-wide environmental policies, identify environmental aspects, maintain regulatory compliance and demonstrate due-diligence.

Intelex's Environmental Management System enables compliance with government legislation and industry standards such as ISO 14001, RC14001 and OHSAS 18001.

To facilitate compliance, Intelex's EMS includes the Intelex Compliance Management Suite, which consists of a Legal Requirements Management; Permits & Related Activities; Emergency Response; Maintenance, Measurement & Monitoring and Operational Control modules.

For organisations preparing to become ISO 14001 certified, the Intelex Environmental Management System can also come pre-loaded with an ISO 14001 Implementation Project Plan. Intelex's software will generate a custom implementation schedule based on the start date and target completion date determined by your organisation's ISO 14001 Implementation Team. The system's built-in reporting functionality will allow end users to create printable, real-time progress reports for a visual representation of tasks completed.

ENVIRONMENTAL MANAGEMENT SUITE

- Environmental Objectives & Targets Module**
 Enables large, mid-size and small businesses to establish sensible objectives and targets while monitoring progress towards an eco-friendly future.
- Environmental Incident Reporting Module**
 A powerful solution for the reporting, tracking and analysis of environmental incident information. This application is designed to meet and exceed the Incident Reporting requirements associated with ISO 14001.
- Environmental Aspects and Impacts Module**
 Enables organisations to identify, rank, and track significant environmental aspects and impacts, providing a quantifiable significance scoring to be identified for each aspect/impact combination. This system systematically walks users through the identification of environmental aspects and enables user to easily manage these aspects.
- Environmental Policy Module**
 Designed to streamline the control, tracking and communication of an organisation's environmental policy.

NOTE: The Intelex Environmental Management System includes the Business Management System.



“I like the way Intelex tells me when something is due. There is no way the reminder will disappear unless the task is completed. You just cannot hope to remember everything when you are busy and working across many disciplines. Everything can be seen at a glance under My Tasks or the Site Map. Service and support is also very good. I like the configurable reports because it is easy to create something that is custom made to suit a particular situation. Intelex helps to make my job easier.”

Joy Adcock, Management Systems Manager,
Facility Management, Continental Pty Ltd

SAFETY MANAGEMENT SYSTEM

The Intelex Safety Management System (SMS) enables companies to practice pro-active and reactive safety management. Because our safety management software utilises a web-based platform employees are able to sign-in to the system from any location with an internet connection. This means that organisations with multiple sites can track safety performance data across their entire organisation in a single management platform. The end result is a completely transparent representation of your organisations safety performance.

Intelex's web-based Safety Management System enables organisations to collect and track safety data in a central, organisation-wide data portal that facilitates the streamlining of corporate policies, work flow and reporting processes as well as regulatory compliance. The Intelex Safety Management System organises your data into real-time reports that can be displayed on corporate dashboards, with the ability to drill-down into individual reports and scorecards for specific reporting details.

Intelex's Safety Management System addresses all areas of an effective safety program including safety objectives and targets; safety incident reporting; safety hazard and risk assessment; safety meeting management; work observations; safety policy; training management; document control; records management; audits management; nonconformances and corrective/preventive actions; permits and other legal requirements; maintenance, measuring and reporting; emergency response; and operational control.

The Intelex Safety Management System has been strategically designed to enable its users to achieve and exceed requirements defined by OHSAS 18001 and AS/NZS 4801-2001.

SAFETY MANAGEMENT SUITE

- **Safety Objectives and Targets Module**
Identify safety aspects, set clearly defined objectives and targets and track the success of the results. Clearly identify and manage progress towards achieving the safety objectives and targets of an organisation to reduce or control significant safety hazards and risks.
- **Standard Safety Incident Reporting Module**
Manage all of the aspects and stages associated with health and safety incidents; including internal reporting, investigating, implementing corrective and preventative actions and external reporting.
- **Safety Hazards & Risk Assessment Module**
Identify, score, rank and mitigate existing and potential safety hazards and risks.
- **Safety Meetings and Management Module**
Utilised as a forum for defining collective objectives, disseminating information, identifying issues and establishing next steps. Enables safety advocates to track meeting-related data; including minutes, policies, issues and correctives actions.
- **Local Safety Meetings Module**
Track local safety meetings, follow-up actions identified during safety meetings and detailed information associated with each meeting. Schedule local safety meetings, and toolbox talks, send automated meeting notifications to attendees and archive an unlimited number of meeting-related documents.
- **Work Observations Module**
Streamline the tracking, scheduling and reporting of employee and work crew observations.
- **Safety Policy Module**
Streamline the control, tracking and communication of an organisation's safety policy.

NOTE: The Intelex Safety Management System includes the Business Management System.



INTEGRATED MANAGEMENT SYSTEM

To extract real value from performance data, organisations need an accurate and comprehensive, real-time view of their business. The Intelex Integrated Management System (IMS) makes achieving that view easily attainable. By integrating the **environmental, quality, health & safety and business performance management systems** into a central information portal, the Intelex integrated management program enables organisations to reduce duplication of effort, increase efficiencies and lower the overall cost of management system maintenance.

With the Intelex Integrated Management System, users throughout your organisation will have the ability to create, access and manage environmental, quality and health & safety information. By integrating management procedures, organisations save time and money while improving effectiveness. The confusion of learning multiple systems is reduced, common approaches can be applied to ensure fluidity and to diminish duplication of effort.

Using Intelex's integrated management software will allow organisations to conveniently track and manage ISO 14001, ISO 9001:2000 and OHSAS 18001 and AS4801 requirements.

NOTE: The Intelex Integrated Management System includes the Business, Environmental, Quality and Safety System.

MOST POPULAR ADD-ON MODULES

- **Audits Management with iForms Module**

Build your own custom iForm solution to meet your audit management needs without requiring the help from a developer. Enable your organisation to be prepared for internal and external audits year-round.

- **Project Management Module with Time and Cost Tracking**

Intelex's project management software drives performance improvement with a module dedicated to planning, tracking and reporting on project management programs, activities and events. It enables the tracking of critical path items, due dates, budgets and employee responsibilities for a single location. The system is also capable of rolling up data to a regional or corporate level.

- **Licence Complying Tracking Module**

Track employee license requirements in an easy to setup matrix. Intelex System Administrators can use the work groups concept to assign license requirements and then track critical dates and action items related to the licenses.

- **GHG Emissions Tracking Module**

With the implementation of new legislation, pending industry regulations and a movement toward greater corporate social responsibility, tracking and managing air emissions/greenhouse gases has become a high priority. In addition to tracking, calculating and reporting emission factors from multiple point sources, the Intelex Greenhouse Gas Emissions Tracking Module includes a reporting suite that enables users to more easily and effectively translate data into tangible energy savings and overall improved business performance. In addition, the Intelex OpenPass API can be used to feed data between a client's Intelex Greenhouse Gas Management System and a pre-existing enterprise management application.

- **Hazardous Materials Management Module**

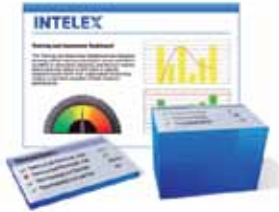
Track hazardous materials purchases and their distribution throughout facilities and locations. The system records usage of materials and displays totals for data management users.

- **Employee Reviews Module**

Track employee review dates, employee review records and corresponding follow-up actions.

"The Intelex Environmental Management System enables us to provide a standardised approach to environmental management for our national network of sites. The web-based system acts as a central portal, streamlining the reporting and tracking of all environmental tasks. Tasks such as audits, conducting reviews and their follow-up actions are now created efficiently and with ease. The real time roll-up of data from each site has allowed for the streamlining of monthly reporting to top management. The system is easy to use and training and support from the experienced and friendly team at Graham A Brown & Associates and Intelex has been invaluable."

Pam Johnson, Environmental Manager, Industrial Galvanizers Corporation Australia



CUSTOM SOLUTIONS THE INTELEX iFORMS™ SYSTEM

The iForms™ Platform is a web-based solution that enables organisations to create tailored solutions to manage and report on their EHS&Q and business performance. The system is innovative both in its design and its technology, in that it is the first product of its kind to provide an all-encompassing solution for managing business data.

The Intellex iForms System enables Intellex users to build custom software solutions without ever requiring the help of a developer. Every iForm application can include user-configured forms, data points, units of measurement and routing. The data collected in an iForm can be viewed in a series of reports and scorecards displayed on an end-user's personalized corporate dashboard.

Use iForms To:

- Build data collection forms as required — complete with database tables, cross-field calculations, variable units of measurement and routing capabilities.
- Analyse, calculate and present data to end-users through personalized, real-time performance dashboards.

Examples of iForms Built by Our Clients:

- Green House Gas Emissions Tracking
- Spill and Release Reporting
- Management of Change
- IT Inventory Management
- Organisational Risk Assessment
- Hazardous Waste Management
- Training Submission Form
- Compliance Management
- Customer Compliant Form

OVERVIEW

• No Programming Experience Needed

Intellex has built the iForms System to utilise a truly user-intuitive, web-based interface that allows users with no programming experience to build rich web applications/forms that can be deployed across the Intellex System.

• Completely Configurable

All of the web forms/applications built using the iForms system are completely configurable. This means that the data point positions, the mapping of submission routes and the inclusion of custom data filters and calculations can all be conveniently adjusted in a matter of minutes.

• Meet Organisational Objectives & Targets

System Administrators can build complete web-based initiatives (e.g., collection forms, data inventories, project scorecards, real-time dashboard reports, etc.) aimed at monitoring, measuring and reporting on an organisation's progress toward achieving their objectives and targets.

• Continual Data Collection

The iForms System is designed to provide organisations with the ability to gather performance data on a continual basis. This data can then be rolled-up in real-time, from multiple locations and displayed on an end-user's dashboard.

THE INTELEX SYSTEM IS ACCESSED BY OVER 250,000 USERS, ACROSS 5 CONTINENTS

CLIENTS SERVICED BY GRAHAM A BROWN & ASSOCIATES

- **Allconnex Water**, Beenleigh QLD – Environment & Safety
- **Casella Wines**, Griffith NSW – Integrated Management System, iForms
- **Continental Corporation**, Bundoora VIC – Environment, Health & Safety
- **Commonwealth Department of Climate Change & Energy Efficiency**, Canberra ACT – Environment
- **Commonwealth Department of Sustainability, Environment, Water, Population and Communities**, Canberra ACT – Environment
- **Coregas**, Sydney NSW – Integrated
- **Industrial Galvanisers**, Australia – Environment, Quality, Health & Safety
- **James Cook University**, Townsville Qld – Environment
- **Lion** (formerly Lion Nathan National Foods), Melbourne VIC – Integrated
- **Macquarie Generation**, Hunter Valley NSW – Environment, Health & Safety
- **Margham Gas Field**, Dubai UAE – Environment
- **OneSteel**, Whyalla SA – Document Control
- **St George Bank**, Sydney NSW – Environment
- **Sydney Airport Corporation Ltd**, Sydney NSW – Environment
- **Unity Water**, Morayfield QLD – Environment
- **Volvo Group Australia**, Wacol QLD – Environment

CLIENTS BY INDUSTRY

Intelex's EQH&S Systems can be used by any size of organisation, regardless of industry. The following are examples of industries Intelex services:

- Aerospace & Defense
- Automotive
- Banking & Financial Services
- Business & Consulting Services
- Computer - Hardware
- Computer - Software
- Construction
- Consumer Goods

- Education
- Energy - Electricity
- Energy - Oil & Gas
- Food & Beverage
- Forestry
- Government - Military
- Government - Municipal
- Healthcare Service
- Manufacturing
- Media & Communications
- Metals & Mining
- Non-profit
- Paper Products
- Science & Technology
- Telecommunications
- Tourism & Hospitality
- Waste/Wastewater Management

SAMPLE OF INTERNATIONAL CLIENTS

- Air Liquide
- Bayer
- BP
- Cornell University
- Heinz
- International Paper
- Kikkoman
- Kraft
- La Farge North America
- Nestle
- North American Galvanizing Company
- Siemens
- Subaru
- Tempur-Pedic
- University of Alaska
- Virgin Atlantic
- WD40
- Xstrata

HOSTING OPTIONS ONLINE OR IN-HOUSE

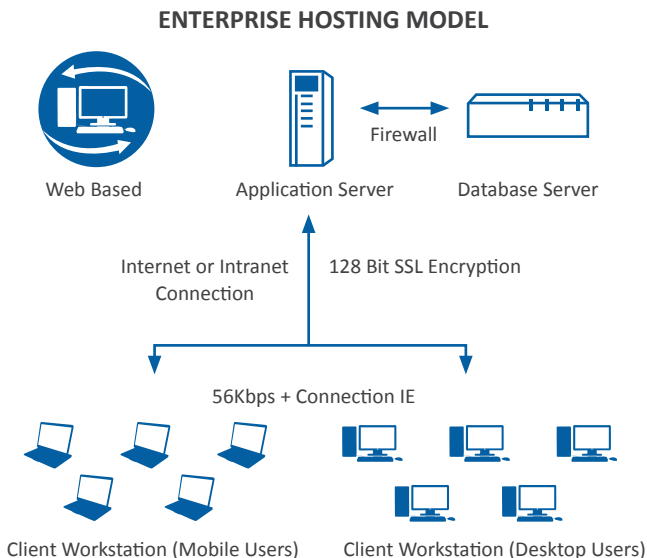
ASP (Online) Hosting

ASP (Application Service Provider) Hosting means that your InteleX Platform is hosted on a secure data server in North America and can be accessed over the internet with the correct username and password from anywhere worldwide.

ASP Hosting is the most popular form of system hosting – it provides ease of access from multiple sites, simplification of support and all upgrades are added automatically by InteleX Technologies. Backup is performed daily.

ASP Systems are hosted by RackSpace – further details can be found at www.rackspace.com

Enterprise (In-House) Hosting



Enterprise hosting is also an option for clients. In this case the system is installed on your organisation's server by a member of your IT department. Your IT Department is then also responsible for installing upgrades and liaising with InteleX Technologies for any technical requests.

The following are the recommended system requirements for the inhouse InteleX host server and the client requirements for the users that access the InteleX Management System.

Server Software Requirements

An organisation hosting the InteleX Management System will be required to obtain the following third party software and associated third party licenses for operation and maintenance of the InteleX system.

One of the following Operating Systems (with appropriate client access licenses):

- Windows 2000 Server (With Internet Information Server 5.0)
- Windows 2000 Advanced Server (With Internet Information Server 5.0)
- Windows 2003 Server (With Internet Information Server 6.0)
- Windows 2003 Advanced Server (With Internet Information Server 6.0)

Additional Software Requirements

- Microsoft SQL Server 2000 and 2005 (with appropriate client access licenses)
- MSXML 4.0 Service Pack 2 (provided free by Microsoft)

Server Hardware Requirements

Hardware requirements vary with the number of simultaneous users in the system. However, the recommended configuration to run with a limited number of users is as follows:

Hard Drive(s)

SCSI Hard Drives with a minimum speed of 7200RPM are recommended (Ultra SCSI preferred). The Database and Application Software should be run on different Hard Drives.

Processor

Pentium III 500 or higher (Pentium IV, Xeon or AMD Athlon Processors Preferred)

Network

100 Megabit Ethernet or faster is recommended.

RAM

512 MB (1 GB optimal)

Email

An account on a SMTP compatible Mail Server is required for the InteleX E-Mail Notification component.

Storage Space

Up to 100MB is required for the installation of the Application. At least 100MB of space should be free at all times to ensure proper software operation. Additional storage requirements will be determined by the size and number of documents uploaded to the InteleX Server.

The initial InteleX Database will require at least 20MB of storage space. Additional storage space will be determined by the amount of user data entered into the InteleX System.

For additional information contact
Graham A Brown & Associates your Intelex agent on
02 4927 8500

IMPROVE YOUR MANAGEMENT SYSTEM PERFORMANCE



Intellex Performance Management System offers flexible and expandable solutions, enabling organisations to select from a library of modules to meet **International Standards for Safety (OSHAS 18001 and AS/NZS 4801), Environment (ISO 14001) and Quality (ISO 9001)**. The Intellex **web-based system** provides the framework for you to **personalise** and put your management system into action across **multiple sites and locations**. You can be assured that once populated and rolled out, your system will meet the requirements of these Standards on an ongoing basis **driving efficiency, productivity and performance**. The Intellex iForms module additionally allows you to develop your own performance management system for almost any other management activity.